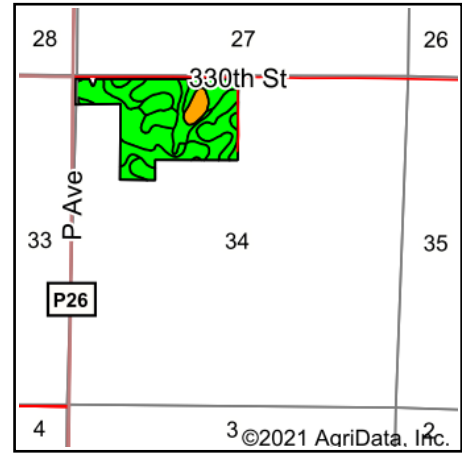
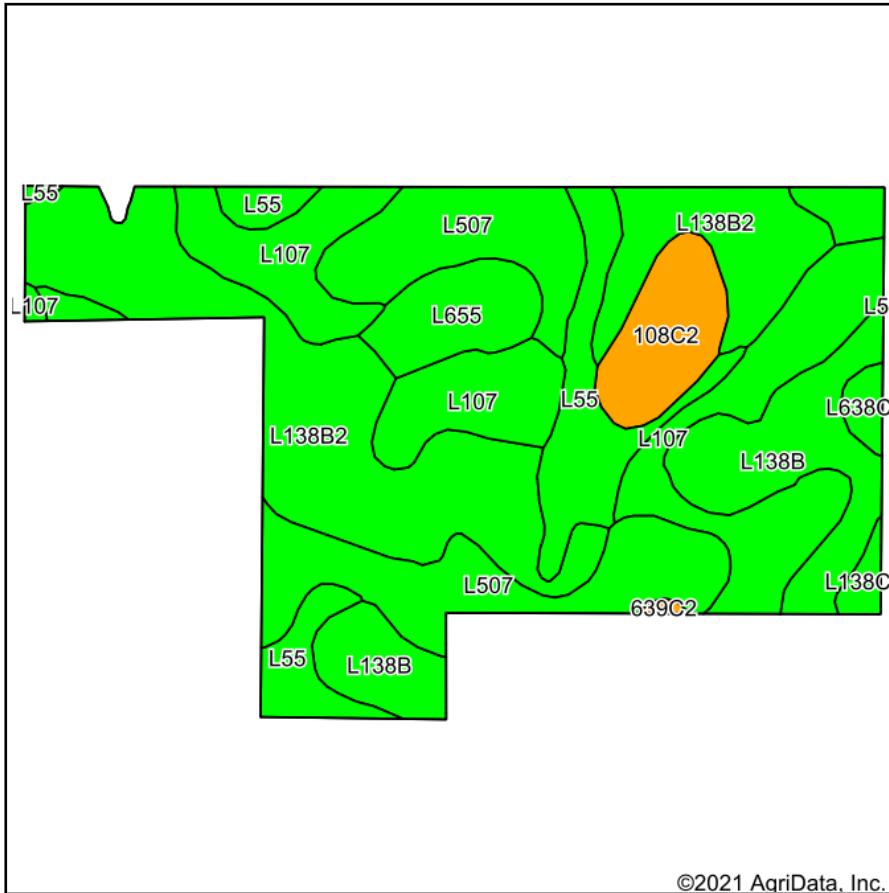


Current Tillable Soils Map



State: **Iowa**
 County: **Greene**
 Location: **34-82N-30W**
 Township: **Franklin**
 Acres: **66.12**
 Date: **9/13/2021**



Maps Provided By:



Soils data provided by USDA and NRCS.

©2021 AgriData, Inc.

Area Symbol: IA073, Soil Area Version: 26

Code	Soil Description	Acres	Percent of field	CSR2 Legend	Non-Irr Class *c	*i Corn	*i Soybeans	CSR2**	CSR	*n NCCPI Overall	
L138B2	Clarion loam, Bemis moraine, 2 to 6 percent slopes, moderately eroded	18.28	27.6%			lle	0	0	85	72	
L107	Webster clay loam, Bemis moraine, 0 to 2 percent slopes	13.54	20.5%			llw	0	0	88	84	
L507	Canisteo clay loam, Bemis moraine, 0 to 2 percent slopes	11.77	17.8%			llw	0	0	87	81	
L138B	Clarion loam, Bemis moraine, 2 to 6 percent slopes	7.70	11.6%			lle	220.8	64	88	80	
L55	Nicollet loam, 1 to 3 percent slopes	7.30	11.0%			le	0	0	91	85	
108C2	Wadena loam, 6 to 12 percent slopes, moderately eroded	3.38	5.1%			llle	80	23.2	44	25	61
L655	Crippin loam, Bemis moraine, 1 to 3 percent slopes	2.92	4.4%			le	0	0	91	85	
L638C2	Clarion-Storden complex, Bemis moraine, 6 to 10 percent slopes, moderately eroded	0.60	0.9%			llle	0	0	75	70	
L138C2	Clarion loam, Bemis moraine, 6 to 10 percent slopes, moderately eroded	0.52	0.8%			llle	0	0	83	67	
639C2	Salida-Storden complex, 5 to 9 percent slopes, moderately erode	0.11	0.2%			llle	80	23.2	46	24	51
Weighted Average						29.9	8.7	85	*-	*n 78.3	

**IA has updated the CSR values for each county to CSR2.

*- CSR weighted average cannot be calculated on the current soils data, use prior data version for csr values.

*i Yield data provided by the ISPAID Database version 8.1.1 developed by IA State University.

*n: The aggregation method is "Weighted Average using all components"

*c: Using Capabilities Class Dominant Condition Aggregation Method

Soils data provided by USDA and NRCS.