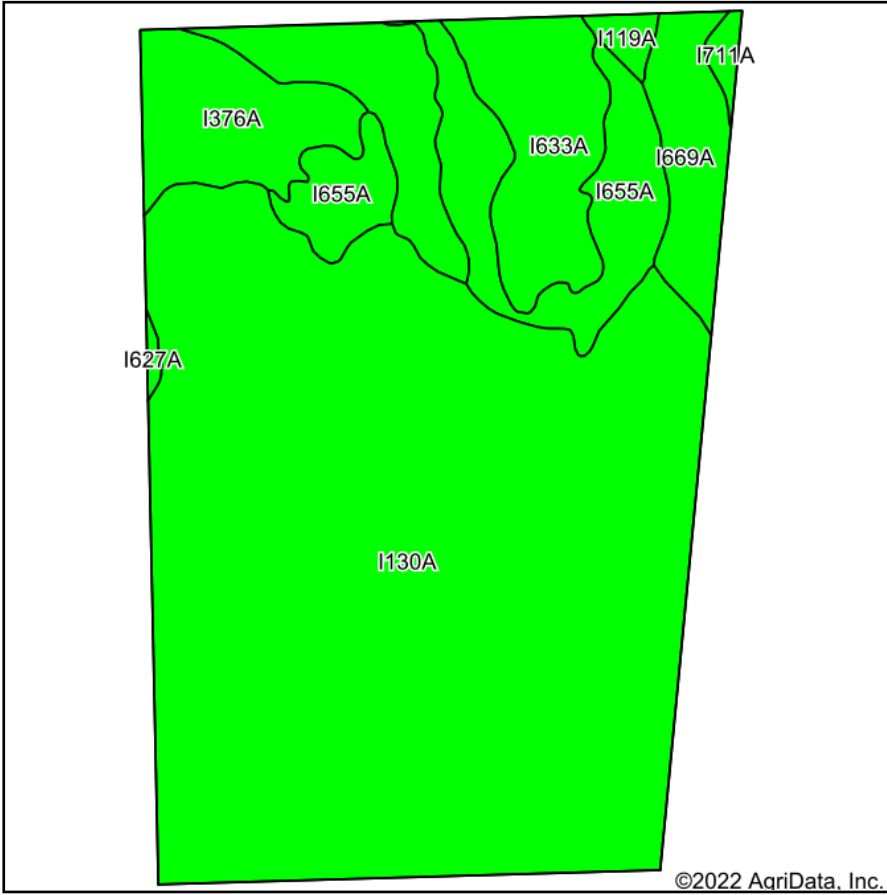
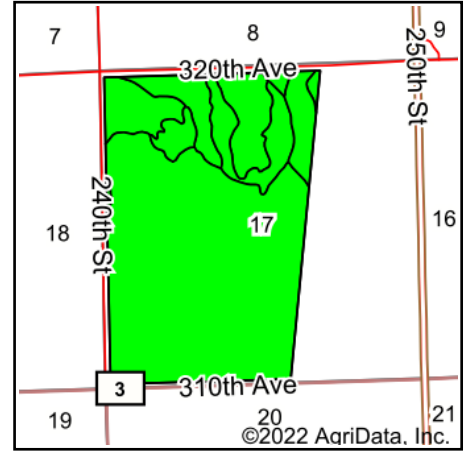


Soils Map



Soils data provided by USDA and NRCS.



State: **Minnesota**
 County: **Norman**
 Location: **17-146N-46W**
 Township: **Lockhart**
 Acres: **385.32**
 Date: **1/18/2022**



Maps Provided By:



© AgriData, Inc. 2021

www.AgriDataInc.com



Area Symbol: MN107, Soil Area Version: 19

Code	Soil Description	Acres	Percent of field	PI Legend	Non-Irr Class *c	Productivity Index
I130A	Hegne-Fargo silty clays, 0 to 1 percent slopes	268.68	69.7%		IIw	88
I633A	Augsburg and Wheatville soils, 0 to 2 percent slopes	42.47	11.0%		IIw	90
I655A	Wheatville loam, 0 to 2 percent slopes	33.25	8.6%		Ile	90
I376A	Colvin silty clay loam, 0 to 1 percent slopes	21.19	5.5%		IIw	89
I669A	Borup-Glyndon loams, 0 to 2 percent slopes	14.89	3.9%		IIw	90
I119A	Bearden silty clay loam, 0 to 2 percent slopes	2.36	0.6%		Ile	93
I711A	Glyndon loam, thin surface, 0 to 2 percent slopes	1.80	0.5%		Ile	89
I627A	Bearden-Fargo complex, 0 to 2 percent slopes	0.68	0.2%		Ile	93
Weighted Average					2.00	88.6

*c: Using Capabilities Class Dominant Condition Aggregation Method
 Soils data provided by USDA and NRCS.