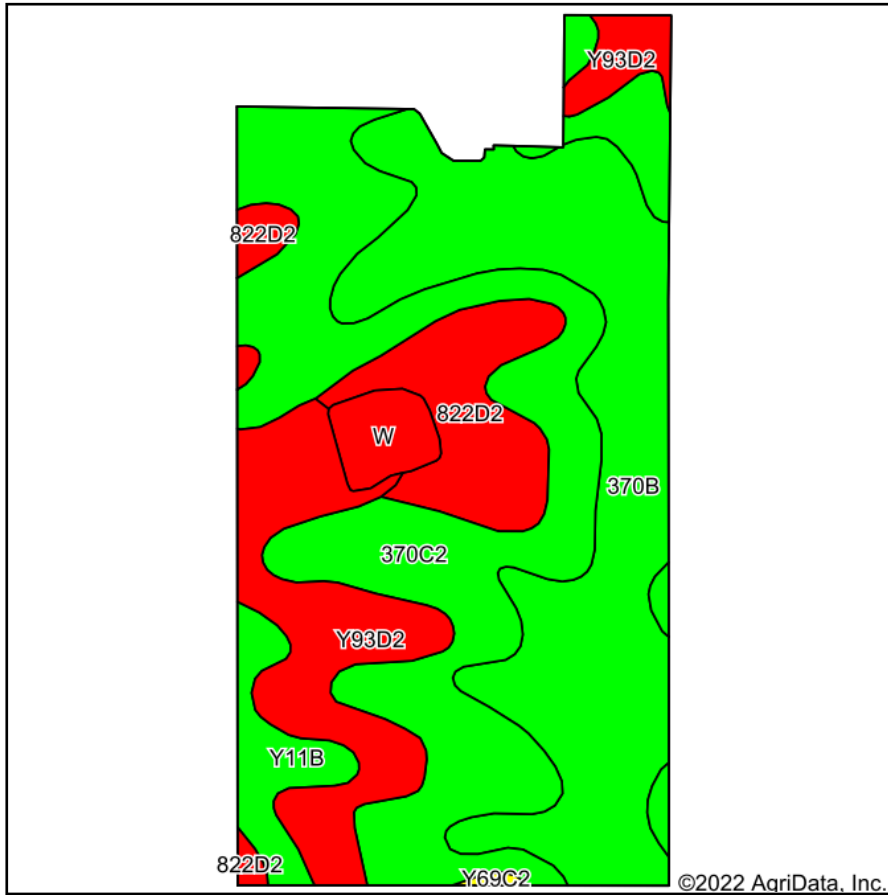
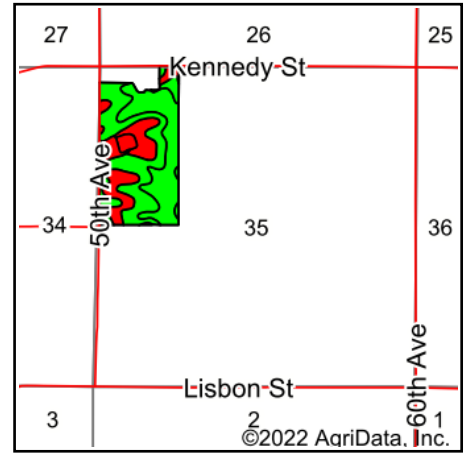


Soils Map



Soils data provided by USDA and NRCS.



State: **Iowa**
 County: **Warren**
 Location: **35-76N-25W**
 Township: **Jefferson**
 Acres: **72.45**
 Date: **5/5/2022**



Maps Provided By:



Area Symbol: IA181, Soil Area Version: 26

Code	Soil Description	Acres	Percent of field	CSR2 Legend	Non-Irr Class *c	CSR2**	CSR	*n NCCPI Overall	*n NCCPI Corn	*n NCCPI Small Grains	*n NCCPI Soybeans
370C2	Sharpsburg silty clay loam, 5 to 9 percent slopes, eroded	26.57	36.7%		IIIe	80	67	84	84	69	67
370B	Sharpsburg silty clay loam, 2 to 5 percent slopes	23.07	31.8%		Ile	91	87	93	93	78	80
Y93D2	Shelby-Adair clay loams, dissected till plain, 9 to 14 percent slopes, eroded	10.96	15.1%		IIIe	35		69	69	55	51
822D2	Lamoni silty clay loam, 9 to 14 percent slopes, eroded	6.99	9.6%		IVe	10	15	60	60	54	43
Y11B	Colo, occasionally flooded-Ely silty clay loams, dissected till plain, 2 to 5 percent slopes	2.97	4.1%		IIw	80		88	86	52	81
W	Water	1.76	2.4%			0	0				
Y69C2	Clearfield silty clay loam, dissected till plain, 5 to 9 percent slopes, eroded	0.13	0.2%		IIIw	56		67	67	65	59
Weighted Average					2.66	68	*-	*n 80.4	*n 80.3	*n 65.9	*n 65.3

**IA has updated the CSR values for each county to CSR2.

*- CSR weighted average cannot be calculated on the current soils data, use prior data version for csr values.

*n: The aggregation method is "Weighted Average using all components"

*c: Using Capabilities Class Dominant Condition Aggregation Method

Soils data provided by USDA and NRCS.