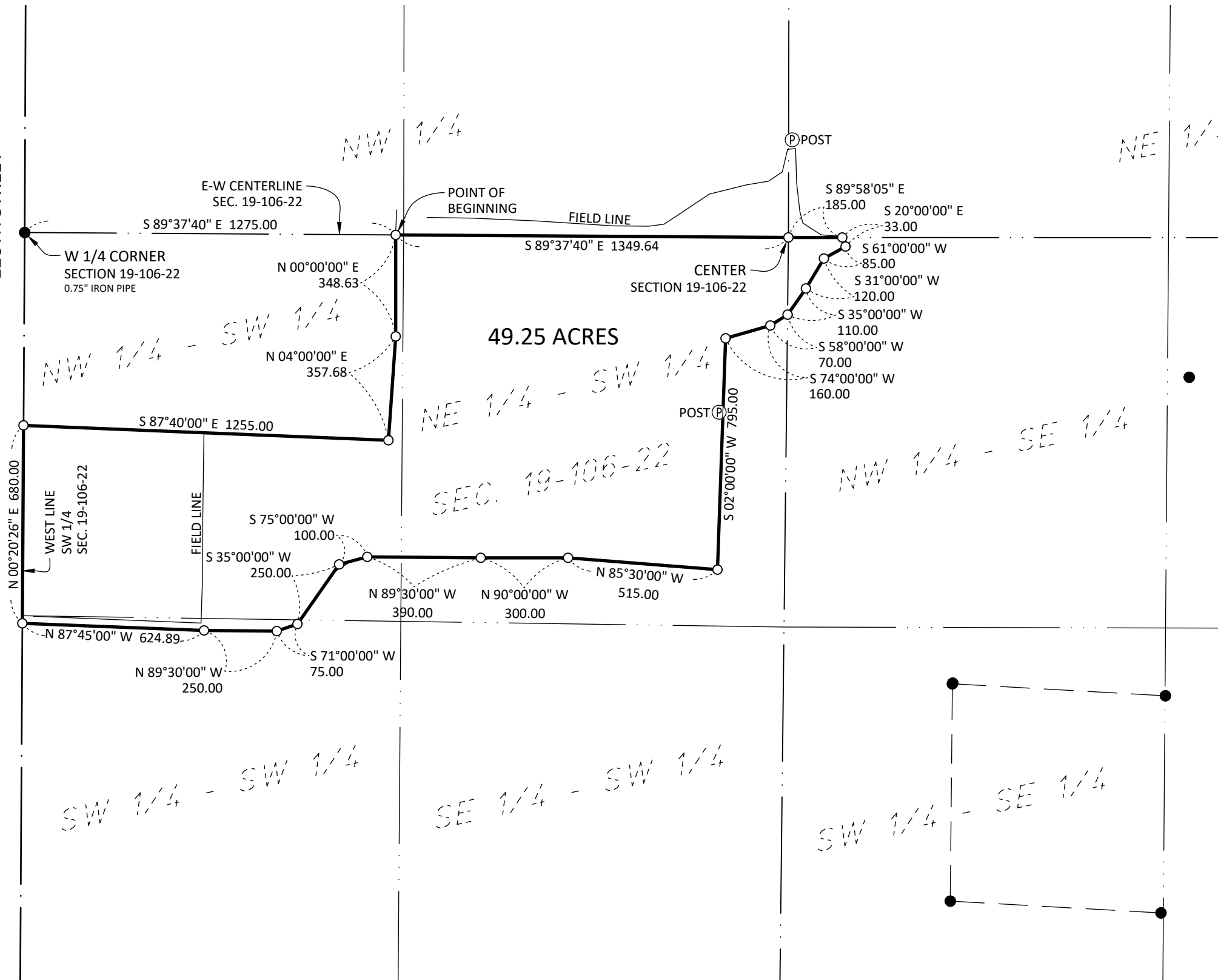


120TH STREET



DESCRIPTION

That part of the Southwest Quarter and that part of the Northwest Quarter of the Southeast Quarter of Section 19, Township 106 North, Range 22 West, Waseca County, Minnesota, described as:

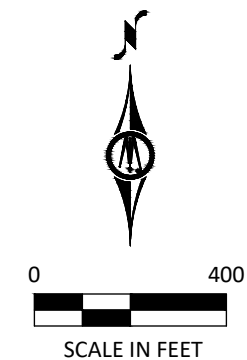
Commencing at the West Quarter Corner of said Section 19; thence South 89 degrees 37 minutes 40 seconds East, (Minnesota County Coordinate System - Waseca County Zone - HARN NAD83 - 1996), along the East-West centerline of said Section 19, a distance of 1275.00 feet to the point of beginning; thence continuing South 89 degrees 37 minutes 40 seconds East, along said East-West centerline, a distance of 1349.64 feet; thence South 89 degrees 58 minutes 05 seconds East, a distance of 185.00 feet; thence South 20 degrees 00 minutes 00 seconds East, a distance of 33.00 feet; thence South 61 degrees 00 minutes 00 seconds West, a distance of 85.00 feet; thence South 31 degrees 00 minutes 00 seconds West, a distance of 120.00 feet; thence South 35 degrees 00 minutes 00 seconds West, a distance of 110.00 feet; thence South 58 degrees 00 minutes 00 seconds West, a distance of 70.00 feet; thence South 74 degrees 00 minutes 00 seconds West, a distance of 160.00 feet; thence South 02 degrees 00 minutes 00 seconds West, a distance of 795.00 feet; thence North 85 degrees 30 minutes 00 seconds West, a distance of 515.00 feet; thence North 90 degrees 00 minutes 00 seconds West, a distance of 300.00 feet; thence North 89 degrees 30 minutes 00 seconds West, a distance of 390.00 feet; thence South 75 degrees 00 minutes 00 seconds West, a distance of 100.00 feet; thence South 35 degrees 00 minutes 00 seconds West, a distance of 250.00 feet; thence South 71 degrees 00 minutes 00 seconds West, a distance of 75.00 feet; thence North 89 degrees 30 minutes 00 seconds West, a distance of 250.00 feet; thence North 87 degrees 45 minutes 00 seconds West, a distance of 624.89 feet to the West line of the Southwest Quarter of said Section 19; thence North 00 degrees 20 minutes 26 seconds East, along said West line, a distance of 680.00 feet; thence South 87 degrees 40 minutes 00 seconds East, a distance of 1255.00 feet; thence North 04 degrees 00 minutes 00 seconds East, a distance of 357.68 feet; thence North 00 degrees 00 minutes 00 seconds East a distance of 348.63 feet to the point of beginning. Containing 49.25 acres.

SURVEYOR'S CERTIFICATION

I hereby certify that this survey, plan, or report was prepared by me or under my direct supervision and that I am a duly Licensed Land Surveyor under the laws of the State of Minnesota.

6/22/2022
Date

Michael M. Eichers
License Number 46564



LEGEND

- 3/4" IRON PIPE MONUMENT SET MARKED BY LIC. NO. 46564
- MONUMENT FOUND

Horizontal Datum: HARN 1996 County Coordinate System

CERTIFICATE OF SURVEY
WASECA COUNTY, MINNESOTA



1960 PREMIER DRIVE
MANKATO, MINNESOTA 56001
(507) 625-4171

PART OF THE SW 1/4 AND PART OF THE NW 1/4 - SE 1/4 OF SECTION 19, TOWNSHIP 106 NORTH, RANGE 22 WEST, WASECA COUNTY, MINNESOTA

FOR: DORN ESTATE