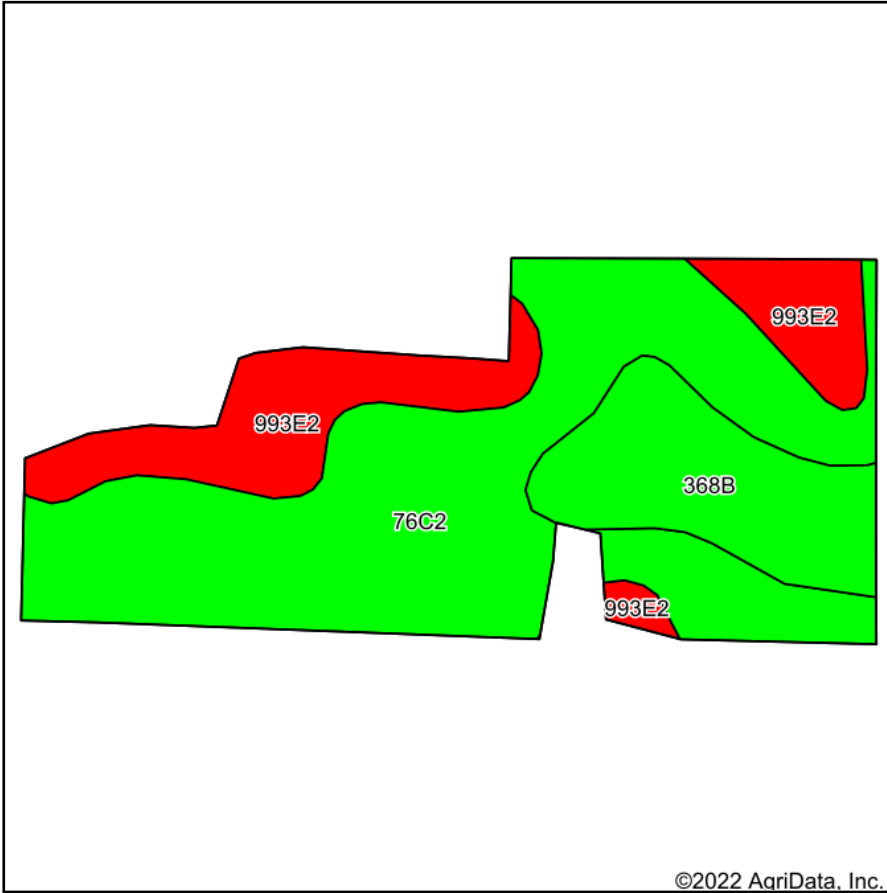
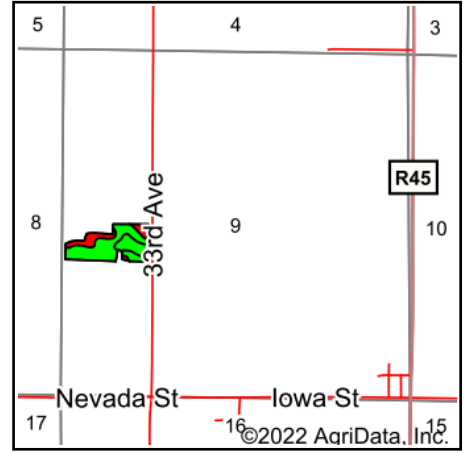


# Soils Map



Soils data provided by USDA and NRCS.



State: **Iowa**  
 County: **Warren**  
 Location: **9-75N-25W**  
 Township: **Jackson**  
 Acres: **12.92**  
 Date: **7/26/2022**



Maps Provided By:



© AgriData, Inc. 2021

www.AgriDataInc.com



Area Symbol: IA181, Soil Area Version: 26

Code	Soil Description	Acres	Percent of field	CSR2 Legend	Non-Irr Class *c	CSR2**	CSR	*n NCCPI Overall	*n NCCPI Corn	*n NCCPI Small Grains	*n NCCPI Soybeans	
76C2	Ladoga silt loam, dissected till plain, 5 to 9 percent slopes, eroded	7.77	60.1%		IIIe	75	65	78	78	69	66	
993E2	Armstrong-Gara loams, 14 to 18 percent slopes, moderately eroded	2.84	22.0%		VIe	17	5	63	63	45	43	
368B	Macksburg silty clay loam, 2 to 5 percent slopes	2.31	17.9%		Ile	89	90	87	87	79	78	
<b>Weighted Average</b>						<b>3.48</b>	<b>64.8</b>	<b>56.3</b>	<b>*n 76.3</b>	<b>*n 76.3</b>	<b>*n 65.5</b>	<b>*n 63.1</b>

\*\*IA has updated the CSR values for each county to CSR2.

\*n: The aggregation method is "Weighted Average using all components"

\*c: Using Capabilities Class Dominant Condition Aggregation Method

Soils data provided by USDA and NRCS.