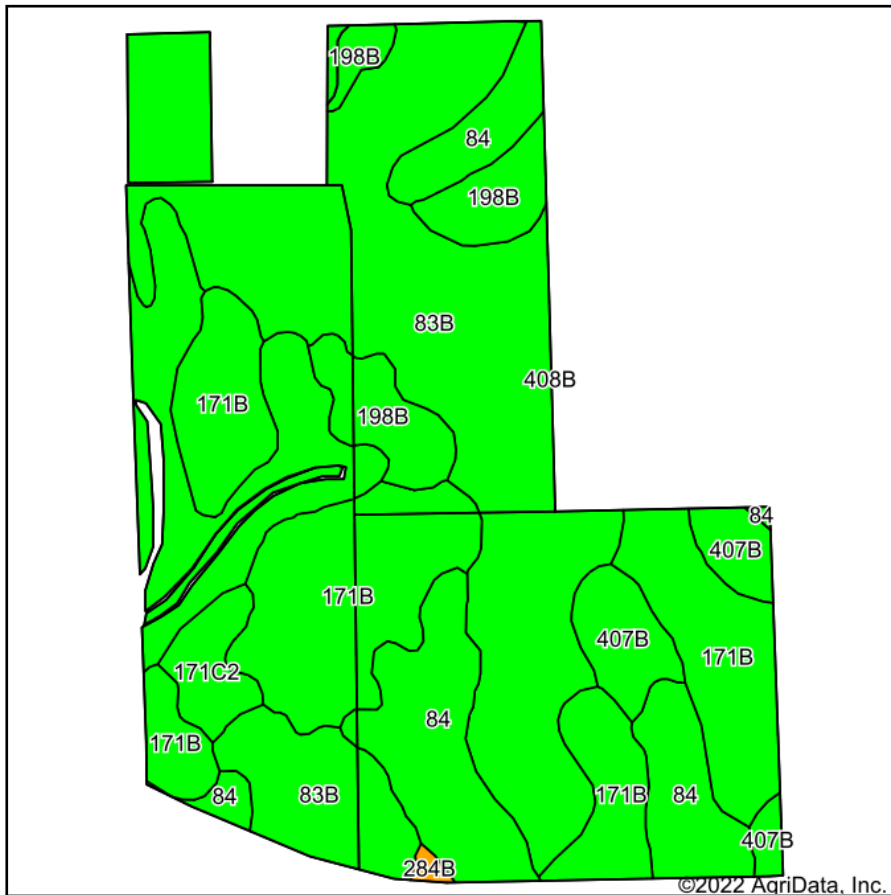
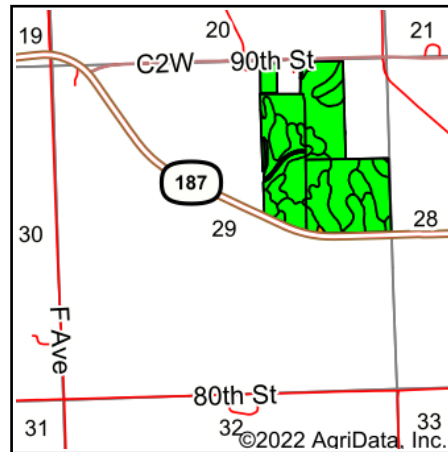


Soils Map - Tillable Acres - Tract 3



Soils data provided by USDA and NRCS.



State: **Iowa**
 County: **Fayette**
 Location: **29-92N-7W**
 Township: **Fairfield**
 Acres: **93.08**
 Date: **10/19/2022**



Maps Provided By:



Area Symbol: IA065, Soil Area Version: 26

Code	Soil Description	Acres	Percent of field	CSR2 Legend	Non-Irr Class *c	*i Corn Bu	*i Alfalfa Tons	*i Soybeans Bu	CSR2**	Corn Bu	Oats Bu	Soybeans Bu	*n NCCPI Overall	
83B	Kenyon loam, 2 to 5 percent slopes	36.43	39.1%		lle	225.6	6.3	65.4	90	210	91	61	87	
171B	Bassett loam, 2 to 5 percent slopes	23.02	24.7%		lle	212.8	6.0	61.7	85	215	92	62	88	
84	Clyde clay loam, 0 to 3 percent slopes	21.59	23.2%		llw	224.0	4.7	65.0	88				90	
198B	Floyd loam, 1 to 4 percent slopes	5.64	6.1%		llw	222.4	5.8	64.5	89				85	
407B	Schley loam, 1 to 4 percent slopes	4.15	4.5%		llw	196.8	5.1	57.1	81				86	
171C2	Bassett loam, 5 to 9 percent slopes, eroded	2.04	2.2%		llle	192.0	5.4	55.7	77	174	88.5	50	80	
284B	Flagler sandy loam, 2 to 5 percent slopes	0.21	0.2%		llle	80.0	2.2	23.2	49				67	
Weighted Average						2.02	219.5	5.7	63.7	87.5	139.2	60.3	40.3	*n 87.6

**IA has updated the CSR values for each county to CSR2.

*i Yield data provided by the ISPAID Database version 8.1.1 developed by IA State University.

*n: The aggregation method is "Weighted Average using all components"

*c: Using Capabilities Class Dominant Condition Aggregation Method

Soils data provided by USDA and NRCS.