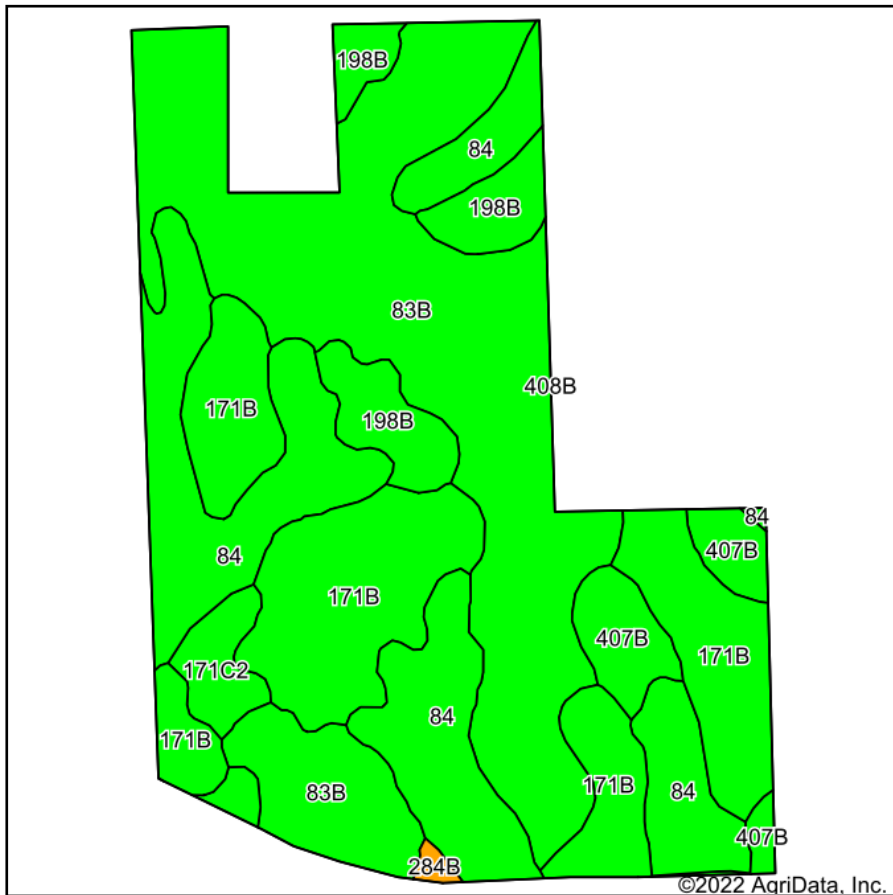
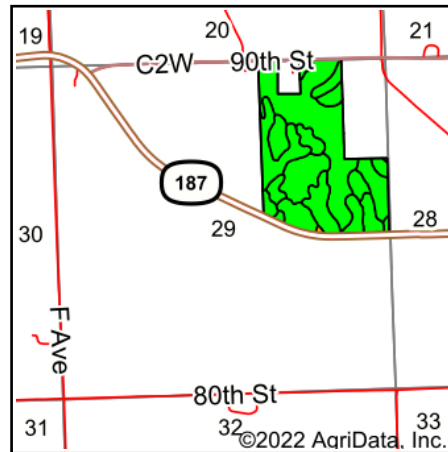


# Total Soils Map - Tract 3



Soils data provided by USDA and NRCS.



State: **Iowa**  
 County: **Fayette**  
 Location: **29-92N-7W**  
 Township: **Fairfield**  
 Acres: **95.5**  
 Date: **10/3/2022**



Maps Provided By:



Area Symbol: IA065, Soil Area Version: 26

Code	Soil Description	Acres	Percent of field	CSR2 Legend	Non-Irr Class *c	*i Corn Bu	*i Alfalfa Tons	*i Soybeans Bu	CSR2**	Corn Bu	Oats Bu	Soybeans Bu	*n NCCPI Overall
83B	Kenyon loam, 2 to 5 percent slopes	37.84	39.6%		Ile	225.6	6.3	65.4	90	210	91	61	87
171B	Bassett loam, 2 to 5 percent slopes	23.04	24.1%		Ile	212.8	6.0	61.7	85	215	92	62	88
84	Clyde clay loam, 0 to 3 percent slopes	22.31	23.4%		IIw	224.0	4.7	65.0	88				90
198B	Floyd loam, 1 to 4 percent slopes	5.81	6.1%		IIw	222.4	5.8	64.5	89				85
407B	Schley loam, 1 to 4 percent slopes	4.12	4.3%		IIw	196.8	5.1	57.1	81				86
171C2	Bassett loam, 5 to 9 percent slopes, eroded	2.04	2.1%		IIIe	192.0	5.4	55.7	77	174	88.5	50	80
284B	Flagler sandy loam, 2 to 5 percent slopes	0.28	0.3%		IIIe	80.0	2.2	23.2	49				67
409B	Dickinson fine sandy loam, till substratum, 2 to 5 percent slopes	0.06	0.1%		IIIe	80.0	2.2	23.2	74				56
<b>Weighted Average</b>						<b>2.02</b>	<b>219.5</b>	<b>5.7</b>	<b>63.6</b>	<b>87.5</b>	<b>138.8</b>	<b>60.1</b>	<b>*n 87.5</b>

\*\*IA has updated the CSR values for each county to CSR2.

\*i Yield data provided by the ISPAID Database version 8.1.1 developed by IA State University.

\*n: The aggregation method is "Weighted Average using all components"

\*c: Using Capabilities Class Dominant Condition Aggregation Method

Soils data provided by USDA and NRCS.