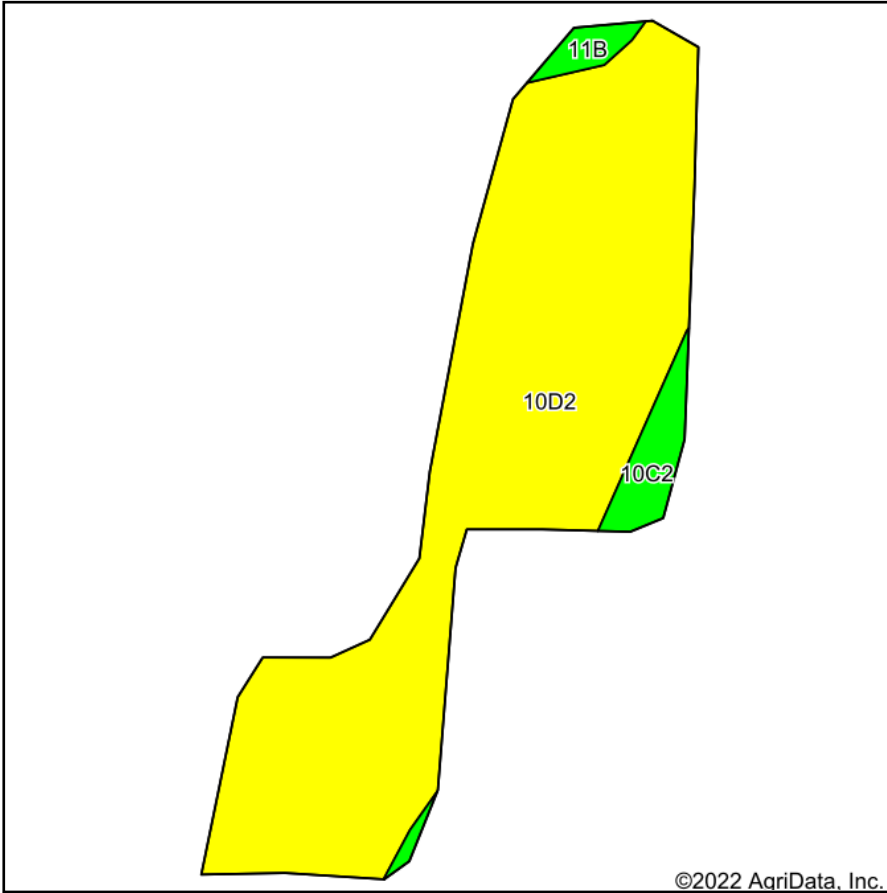
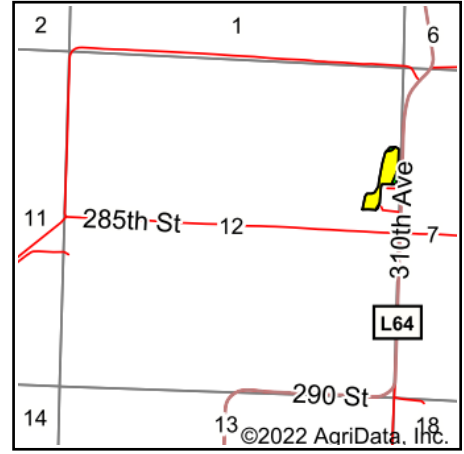


# Soils Map



Soils data provided by USDA and NRCS.

©2022 AgriData, Inc.



State: **Iowa**  
 County: **Fremont**  
 Location: **12-67N-42W**  
 Township: **Madison**  
 Acres: **5.01**  
 Date: **10/25/2022**



Maps Provided By:



© AgriData, Inc. 2021

www.AgriDataInc.com



Area Symbol: IA071, Soil Area Version: 28

Code	Soil Description	Acres	Percent of field	CSR2 Legend	Non-Irr Class *c	CSR2**	CSR	*n NCCPI Overall	*n NCCPI Corn	*n NCCPI Small Grains	*n NCCPI Soybeans	
10D2	Monona silt loam, 9 to 14 percent slopes, eroded	4.65	92.8%	Yellow	IIIe	60	53	79	79	64	73	
10C2	Monona silt loam, 5 to 9 percent slopes, eroded	0.26	5.2%	Green	IIIe	86	63	84	84	67	79	
11B	Colo-Judson silty clay loams, 0 to 5 percent slopes, occasionally flooded	0.10	2.0%	Light Green	IIw	80	68	87	85	49	81	
<b>Weighted Average</b>						<b>2.98</b>	<b>61.7</b>	<b>53.8</b>	<b>*n 79.4</b>	<b>*n 79.4</b>	<b>*n 63.9</b>	<b>*n 73.5</b>

\*\*IA has updated the CSR values for each county to CSR2.

\*n: The aggregation method is "Weighted Average using all components"

\*c: Using Capabilities Class Dominant Condition Aggregation Method

Soils data provided by USDA and NRCS.