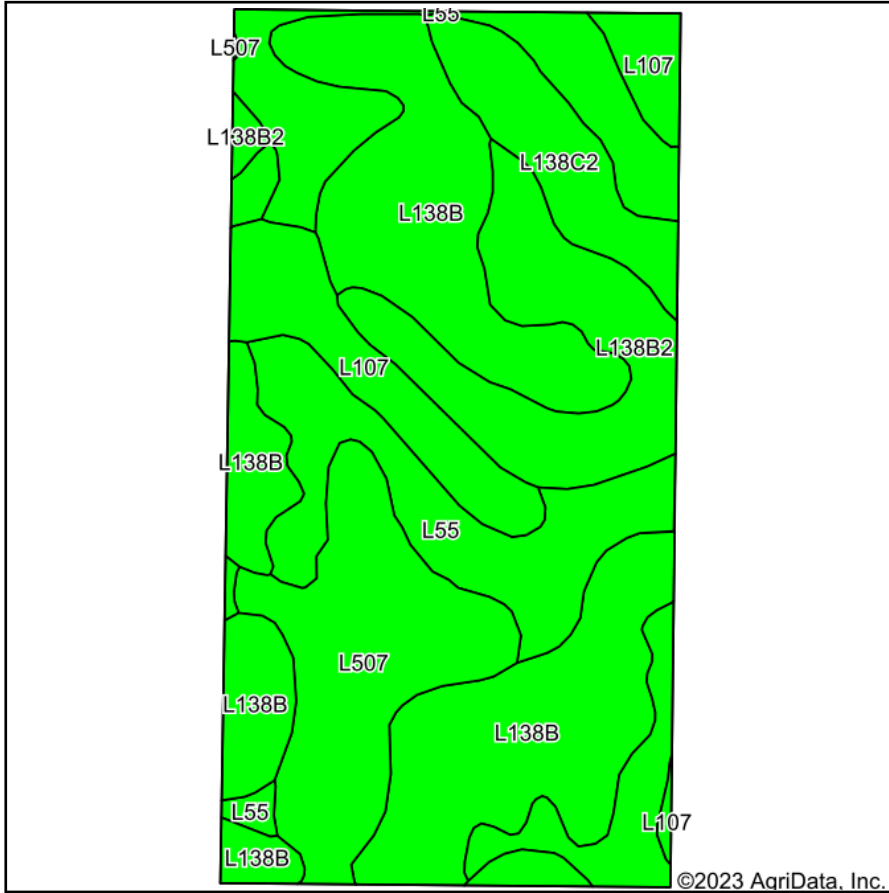
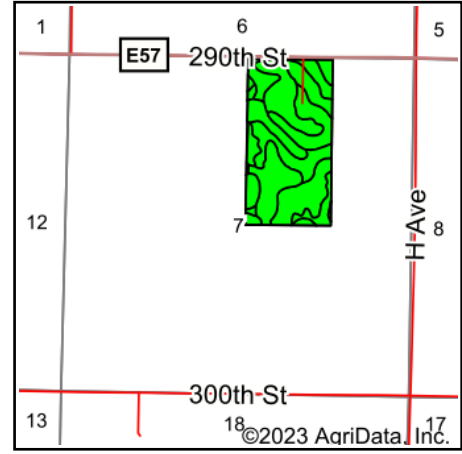


Tillable Soils Map



Soils data provided by USDA and NRCS.



State: **Iowa**
 County: **Greene**
 Location: **7-82N-31W**
 Township: **Greenbrier**
 Acres: **78.79**
 Date: **3/21/2023**



Maps Provided By:



© AgriData, Inc. 2023

www.AgriDataInc.com



Area Symbol: IA073, Soil Area Version: 28

Code	Soil Description	Acres	Percent of field	CSR2 Legend	Non-Irr Class *c	*i Corn Bu	*i Soybeans Bu	CSR2**	*n NCCPI Overall	
L138B	Clarion loam, Bemis moraine, 2 to 6 percent slopes	27.57	35.0%		Ile	220.8	64.0	88	79	
L55	Nicollet loam, 1 to 3 percent slopes	18.68	23.7%		Ie	0.0	0.0	91	84	
L507	Canisteo clay loam, Bemis moraine, 0 to 2 percent slopes	11.49	14.6%		IIw	0.0	0.0	87	81	
L138B2	Clarion loam, Bemis moraine, 2 to 6 percent slopes, moderately eroded	9.40	11.9%		Ile	0.0	0.0	85	70	
L107	Webster clay loam, Bemis moraine, 0 to 2 percent slopes	6.81	8.6%		IIw	0.0	0.0	88	84	
L138C2	Clarion loam, Bemis moraine, 6 to 10 percent slopes, moderately eroded	4.84	6.1%		IIIe	0.0	0.0	83	65	
Weighted Average						1.82	77.3	22.4	87.9	*n 79

**IA has updated the CSR values for each county to CSR2.

*i Yield data provided by the ISPAID Database version 8.1.1 developed by IA State University.

*n: The aggregation method is "Weighted Average using all components"

*c: Using Capabilities Class Dominant Condition Aggregation Method

Soils data provided by USDA and NRCS.