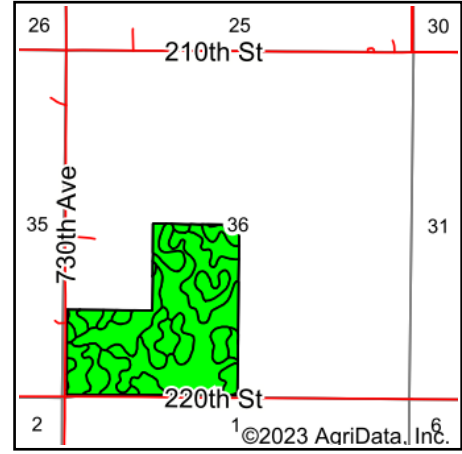
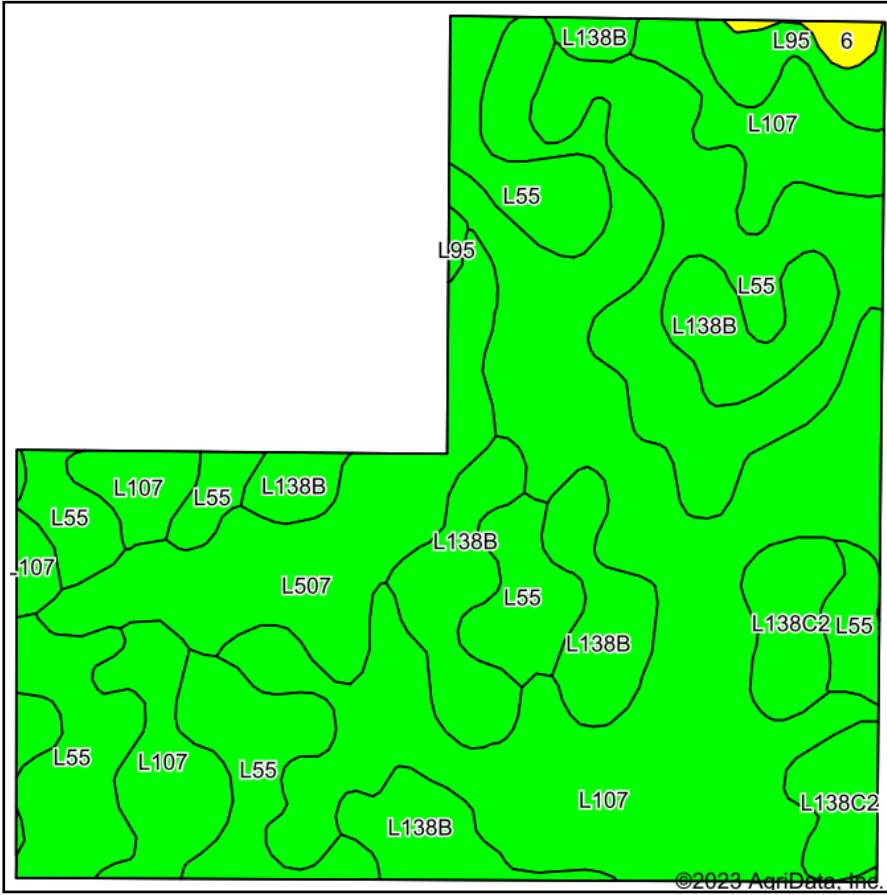


Tillable Soils Map



State: **Iowa**
 County: **Story**
 Location: **36-84N-21W**
 Township: **Sherman**
 Acres: **116.94**
 Date: **6/7/2023**



Maps Provided By:



Soils data provided by USDA and NRCS.

Area Symbol: IA169, Soil Area Version: 34

Code	Soil Description	Acres	Percent of field	CSR2 Legend	Non-Irr Class *c	*i Corn Bu	*i Soybeans Bu	CSR2**	CSR	*n NCCPI Overall	
L107	Webster clay loam, Bemis moraine, 0 to 2 percent slopes	48.62	41.6%		llw	0.0	0.0	88		84	
L55	Nicollet loam, 1 to 3 percent slopes	33.14	28.3%		le	0.0	0.0	91		84	
L138B	Clarion loam, Bemis moraine, 2 to 6 percent slopes	15.96	13.6%		lle	80.0	23.2	88		79	
L507	Canisteo clay loam, Bemis moraine, 0 to 2 percent slopes	10.99	9.4%		llw	0.0	0.0	87		81	
L138C2	Clarion loam, Bemis moraine, 6 to 10 percent slopes, moderately eroded	5.13	4.4%		llle	0.0	0.0	83		65	
L95	Harps clay loam, Bemis moraine, 0 to 2 percent slopes	2.44	2.1%		llw	0.0	0.0	75		80	
6	Okoboji silty clay loam, 0 to 1 percent slopes	0.66	0.6%		lllw	177.6	51.5	59	59	76	
Weighted Average						1.77	11.9	3.5	88.1	*-	*n 82.1

**IA has updated the CSR values for each county to CSR2.

*- CSR weighted average cannot be calculated on the current soils data, use prior data version for csr values.

*i Yield data provided by the ISPAID Database version 8.1.1 developed by IA State University.

*n: The aggregation method is "Weighted Average using all components"

*c: Using Capabilities Class Dominant Condition Aggregation Method

Soils data provided by USDA and NRCS.