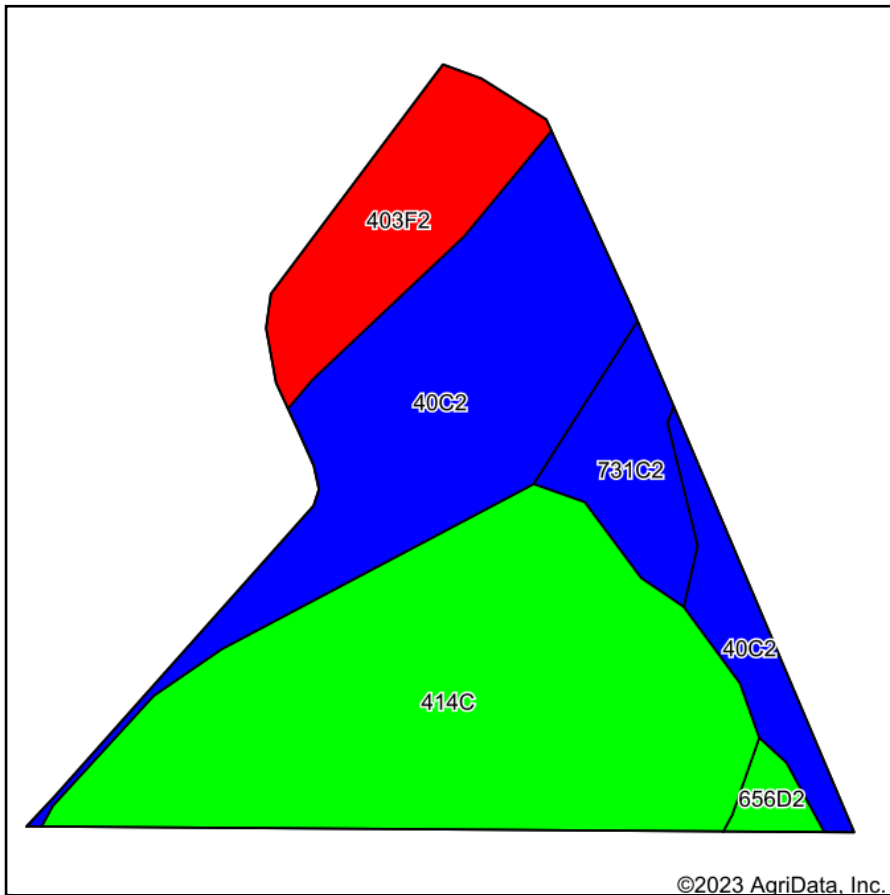
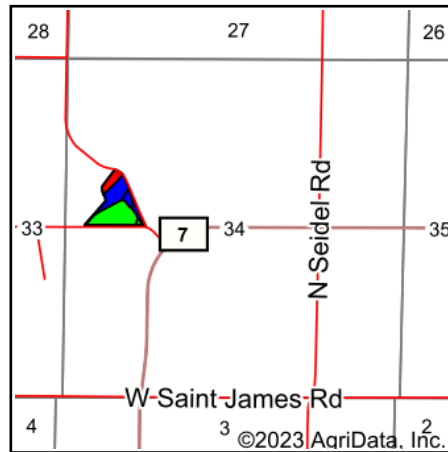


Total Soils Map



Soils data provided by USDA and NRCS.



State: **Illinois**
 County: **Stephenson**
 Location: **34-29N-7E**
 Township: **Oneco**
 Acres: **9.58**
 Date: **8/7/2023**



Maps Provided By:



Area Symbol: IL177, Soil Area Version: 16

Code	Soil Description	Acres	Percent of field	Il. State Productivity Index Legend	Crop productivity index for optimum management
**414C	Myrtle silt loam, 5 to 10 percent slopes	4.55	47.5%		**121
**40C2	Dodgeville silt loam, 5 to 10 percent slopes, eroded	3.12	32.6%		**97
**403F2	Elizabeth silt loam, 18 to 35 percent slopes, eroded	1.12	11.7%		**38
**731C2	Nasset silt loam, 5 to 10 percent slopes, eroded	0.64	6.7%		**105
**656D2	Octagon silt loam, 6 to 12 percent slopes, eroded	0.15	1.6%		**110
Weighted Average					102.2

Table: Optimum Crop Productivity Ratings for Illinois Soil by K.R. Olson and J.M. Lang, Office of Research, ACES, University of Illinois at Champaign-Urbana. Version: 1/2/2012 Amended Table S2 B811

Crop yields and productivity indices for optimum management (B811) are maintained at the following NRES web site: <http://soilproductivity.nres.illinois.edu/>

** Indexes adjusted for slope and erosion according to Bulletin 811 Table S3

Soils data provided by USDA and NRCS. Soils data provided by University of Illinois at Champaign-Urbana.