



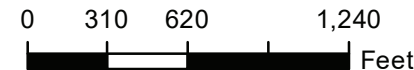
### Farm 9546

**S20 T155N R102W**

Phy Cnty: Williams

**2023 Program Year**

Map Created February 14, 2023



- Unless Otherwise Noted:**
- Barley = Spring for Grain
  - Canola = Spring for Processing
  - Corn = Yellow for Grain
  - Flax = Common for Grain
  - Oats = Spring for Grain
  - Soybeans = Common for Grain
  - Sunflowers = Oil for Grain
  - Wheat = Spring for Grain
  - All fields are non-irrigated
  - Shares are 100% to operator

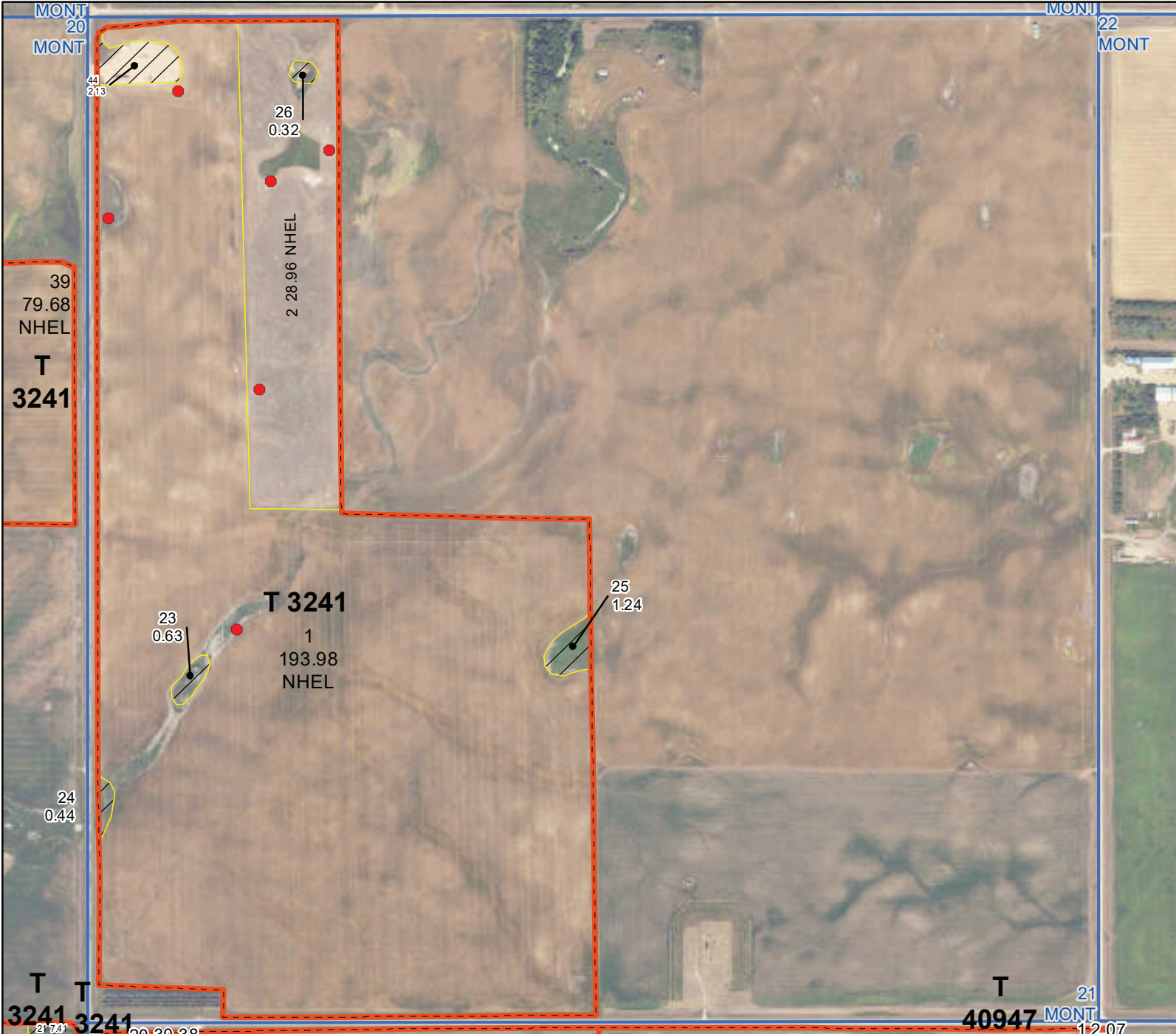
### Common Land Unit

- Tract Boundary
- Non-Cropland
- Cropland
- PLSS

### Wetland Determination Identifiers

- Restricted Use
- ▼ Limited Restrictions
- Exempt from Conservation
- Compliance Provisions

United States Department of Agriculture (USDA) Farm Service Agency (FSA) maps are for FSA Program administration only. This map does not represent a legal survey or reflect actual ownership; rather it depicts the information provided directly from the producer and/or National Agricultural Imagery Program (NAIP) imagery. The producer accepts the data 'as is' and assumes all risks associated with its use. USDA-FSA assumes no responsibility for actual or consequential damage incurred as a result of any user's reliance on this data outside FSA Programs. Wetland identifiers do not represent the size, shape, or specific determination of the area. Refer to your original determination (CPA-026 and attached maps) for exact boundaries and determinations or contact USDA Natural Resources Conservation Service (NRCS). **The imagery displayed on this map was collected in calendar year 2022.**



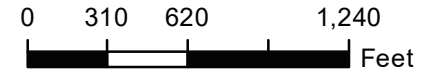
### Farm 9546

S21 T155N R102W

Phy Cnty: Williams

2023 Program Year

Map Created February 14, 2023



- Unless Otherwise Noted:**
- Barley = Spring for Grain
  - Canola = Spring for Processing
  - Corn = Yellow for Grain
  - Flax = Common for Grain
  - Oats = Spring for Grain
  - Soybeans = Common for Grain
  - Sunflowers = Oil for Grain
  - Wheat = Spring for Grain
  - All fields are non-irrigated
  - Shares are 100% to operator

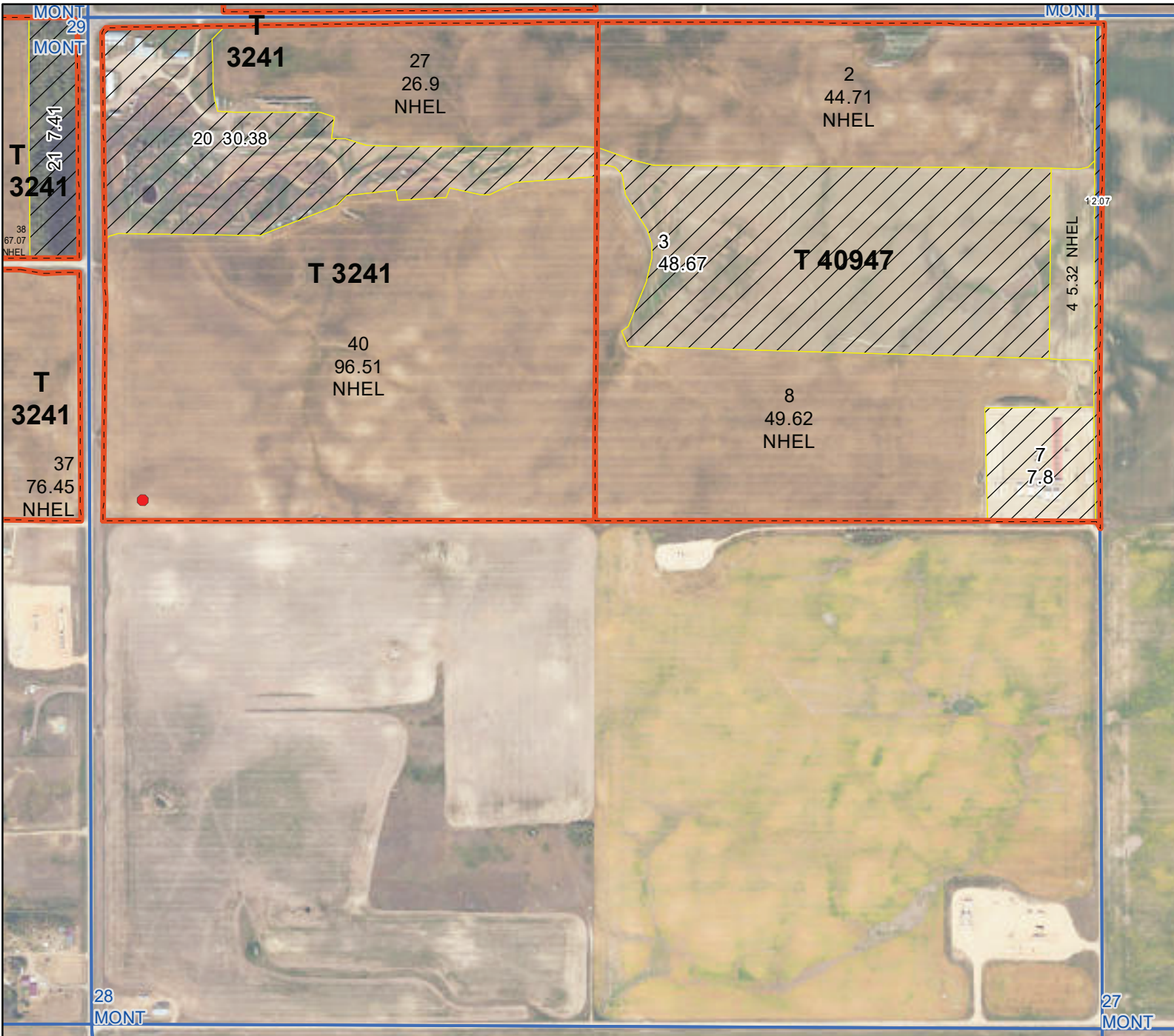
### Common Land Unit

- Tract Boundary
- Non-Cropland
- Cropland
- PLSS

### Wetland Determination Identifiers

- Restricted Use
- Limited Restrictions
- Exempt from Conservation
- Compliance Provisions

United States Department of Agriculture (USDA) Farm Service Agency (FSA) maps are for FSA Program administration only. This map does not represent a legal survey or reflect actual ownership; rather it depicts the information provided directly from the producer and/or National Agricultural Imagery Program (NAIP) imagery. The producer accepts the data 'as is' and assumes all risks associated with its use. USDA-FSA assumes no responsibility for actual or consequential damage incurred as a result of any user's reliance on this data outside FSA Programs. Wetland identifiers do not represent the size, shape, or specific determination of the area. Refer to your original determination (CPA-026 and attached maps) for exact boundaries and determinations or contact USDA Natural Resources Conservation Service (NRCS). **The imagery displayed on this map was collected in calendar year 2022.**



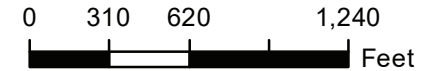
## Farm 9546

**S28 T155N R102W**

Phy Cnty: Williams

**2023 Program Year**

Map Created February 14, 2023



**Unless Otherwise Noted:**

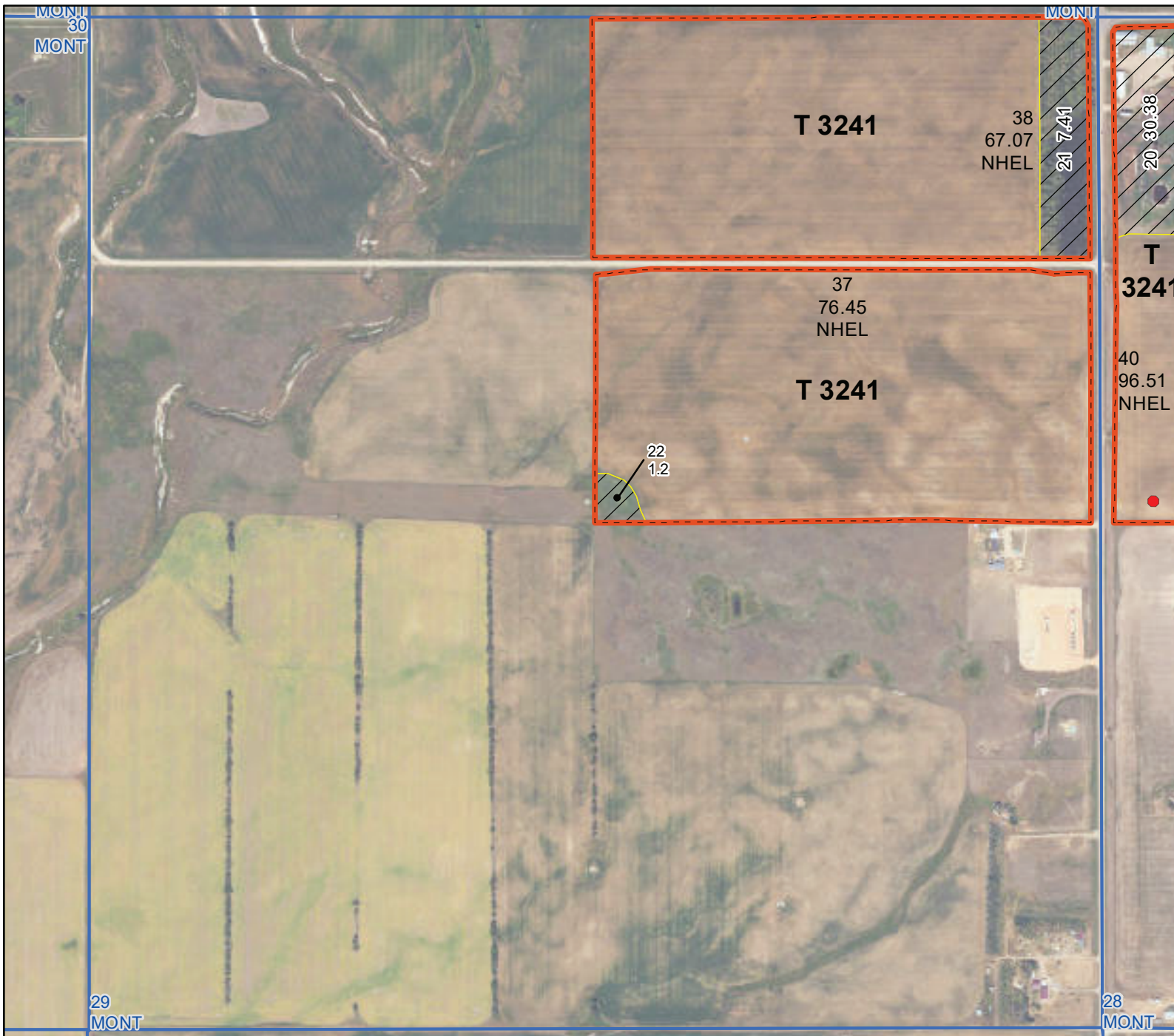
- Barley = Spring for Grain
- Canola = Spring for Processing
- Corn = Yellow for Grain
- Flax = Common for Grain
- Oats = Spring for Grain
- Soybeans = Common for Grain
- Sunflowers = Oil for Grain
- Wheat = Spring for Grain
- All fields are non-irrigated
- Shares are 100% to operator

### Common Land Unit

- Tract Boundary
- Non-Cropland
- Cropland
- PLSS

### Wetland Determination Identifiers

- Restricted Use
- Limited Restrictions
- Exempt from Conservation
- Compliance Provisions



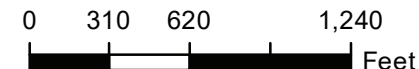
## Farm 9546

**S29 T155N R102W**

Phy Cnty: Williams

**2023 Program Year**

Map Created February 14, 2023



- Unless Otherwise Noted:**
- Barley = Spring for Grain
  - Canola = Spring for Processing
  - Corn = Yellow for Grain
  - Flax = Common for Grain
  - Oats = Spring for Grain
  - Soybeans = Common for Grain
  - Sunflowers = Oil for Grain
  - Wheat = Spring for Grain
  - All fields are non-irrigated
  - Shares are 100% to operator

### Common Land Unit

- Tract Boundary
- Non-Cropland
- Cropland
- PLSS

### Wetland Determination Identifiers

- Restricted Use
- Limited Restrictions
- Exempt from Conservation
- Compliance Provisions