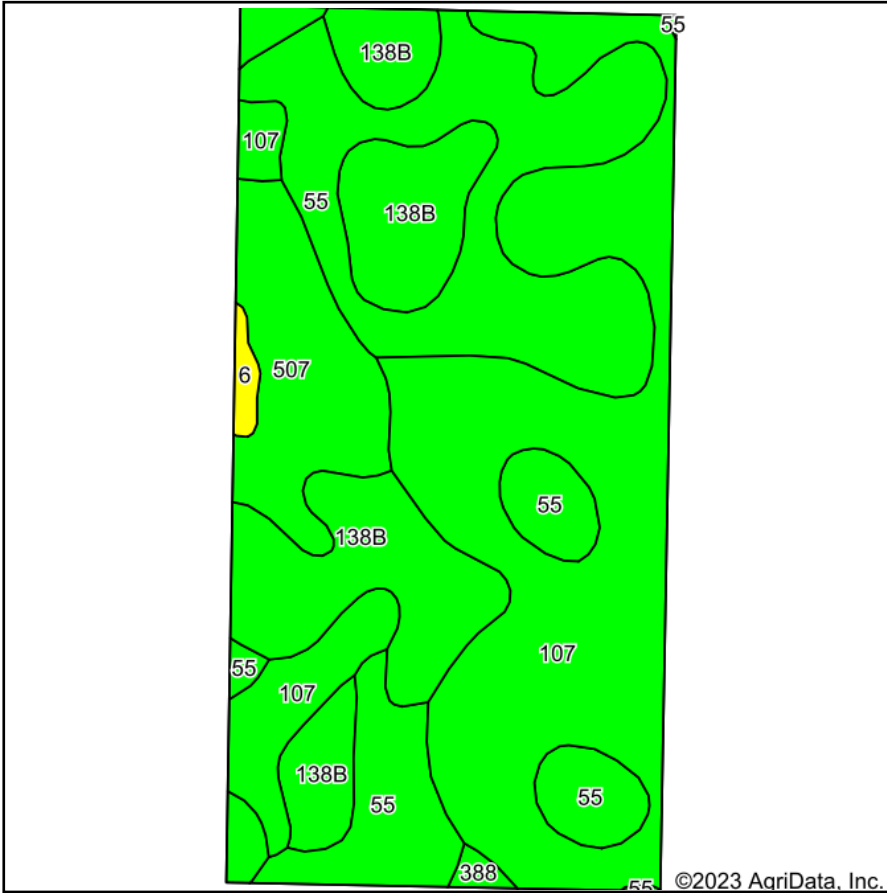
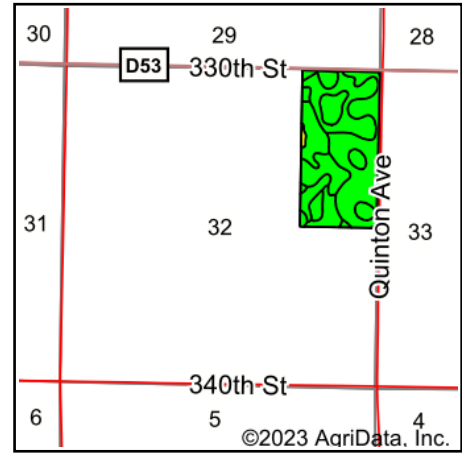


Tillable Soils Map



Soils data provided by USDA and NRCS.



State: **Iowa**
 County: **Calhoun**
 Location: **32-87N-32W**
 Township: **Logan**
 Acres: **76.85**
 Date: **9/19/2023**



Maps Provided By:



© AgriData, Inc. 2023

www.AgriDataInc.com



Area Symbol: IA025, Soil Area Version: 32

Code	Soil Description	Acres	Percent of field	CSR2 Legend	Non-Irr Class *c	*i Corn Bu	*i Soybeans Bu	CSR2**	CSR	*n NCCPI Overall	
107	Webster clay loam, 0 to 2 percent slopes	30.54	39.7%		llw	224.0	65.0	86	83	82	
55	Nicollet clay loam, 1 to 3 percent slopes	22.63	29.4%		lw	233.6	67.7	89	88	81	
138B	Clarion loam, 2 to 6 percent slopes	15.13	19.7%		lle	225.6	65.4	89	80	83	
507	Canisteo clay loam, 0 to 2 percent slopes	7.72	10.0%		llw	224.0	65.0	84	78	81	
6	Okoboji silty clay loam, 0 to 1 percent slopes	0.50	0.7%		llw	164.8	47.8	59	57	76	
388	Kossuth silty clay loam, 0 to 2 percent slopes	0.33	0.4%		llw	224.0	65.0	86	77	89	
Weighted Average						1.71	226.8	65.8	87.1	83.2	*n 81.8

**IA has updated the CSR values for each county to CSR2.

*i Yield data provided by the ISPAID Database version 8.1.1 developed by IA State University.

*n: The aggregation method is "Weighted Average using all components"

*c: Using Capabilities Class Dominant Condition Aggregation Method

Soils data provided by USDA and NRCS.