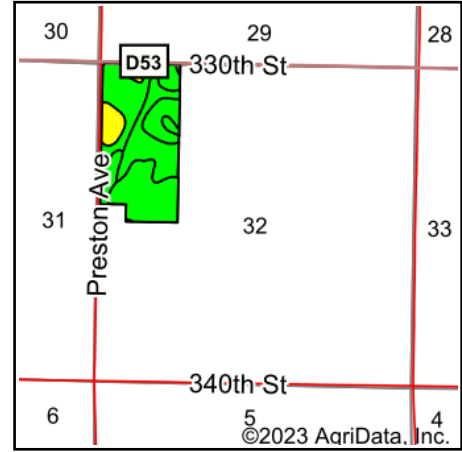


# Tillable Soils Map



State: **Iowa**  
 County: **Calhoun**  
 Location: **32-87N-32W**  
 Township: **Logan**  
 Acres: **74.45**  
 Date: **9/19/2023**



Maps Provided By:



© AgriData, Inc. 2023

www.AgriDataInc.com



Soils data provided by USDA and NRCS.

©2023 AgriData, Inc.

Area Symbol: IA025, Soil Area Version: 32

Code	Soil Description	Acres	Percent of field	CSR2 Legend	Non-Irr Class *c	*i Corn Bu	*i Soybeans Bu	CSR2**	CSR	*n NCCPI Overall	
507	Canisteo clay loam, 0 to 2 percent slopes	35.90	48.2%		llw	224.0	65.0	84	78	81	
107	Webster clay loam, 0 to 2 percent slopes	17.90	24.0%		llw	224.0	65.0	86	83	82	
55	Nicollet clay loam, 1 to 3 percent slopes	14.66	19.7%		lw	233.6	67.7	89	88	81	
6	Okoboji silty clay loam, 0 to 1 percent slopes	5.78	7.8%		llw	164.8	47.8	59	57	76	
388	Kossuth silty clay loam, 0 to 2 percent slopes	0.21	0.3%		llw	224.0	65.0	86	77	89	
<b>Weighted Average</b>						<b>1.88</b>	<b>221.3</b>	<b>64.2</b>	<b>83.5</b>	<b>79.5</b>	<b>*n 80.9</b>

\*\*IA has updated the CSR values for each county to CSR2.

\*i Yield data provided by the ISPAID Database version 8.1.1 developed by IA State University.

\*n: The aggregation method is "Weighted Average using all components"

\*c: Using Capabilities Class Dominant Condition Aggregation Method

Soils data provided by USDA and NRCS.